

Oxford City Planning Committee Presentation

www.oxford.gov.uk



21

Reference Number: 25/03196/LBC

Site Address: Mansfield College, Oxford



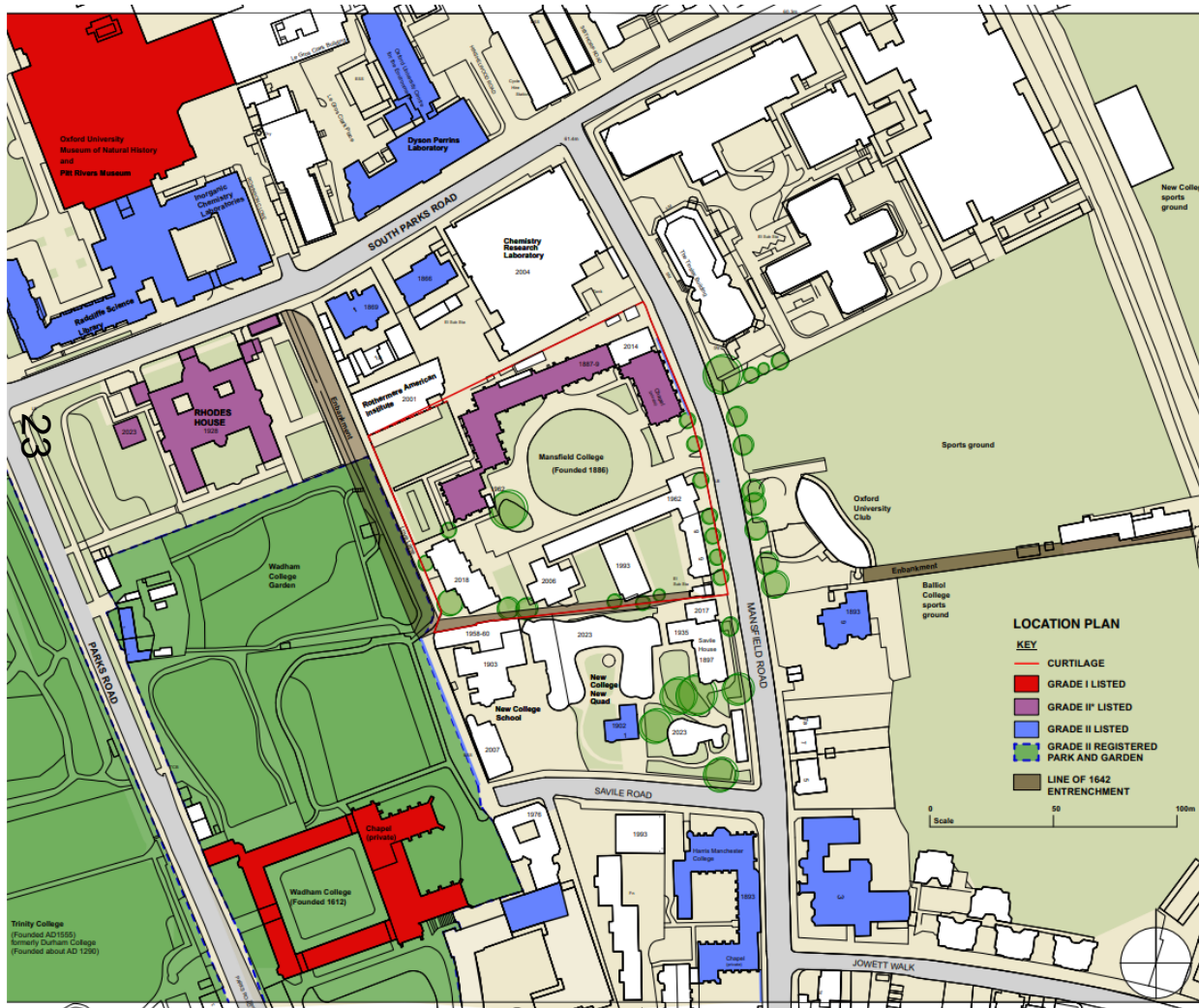
Site Location



[www.oxford](http://www.oxford.gov.uk)



Heritage Assets



Location plan showing Mansfield College in context with designated heritage assets [all within the conservation area]. The red line shows the historic curtilage. The modern northern boundary and application site boundary differ slightly from this line.



View from main quad



www.oxford.gov.uk



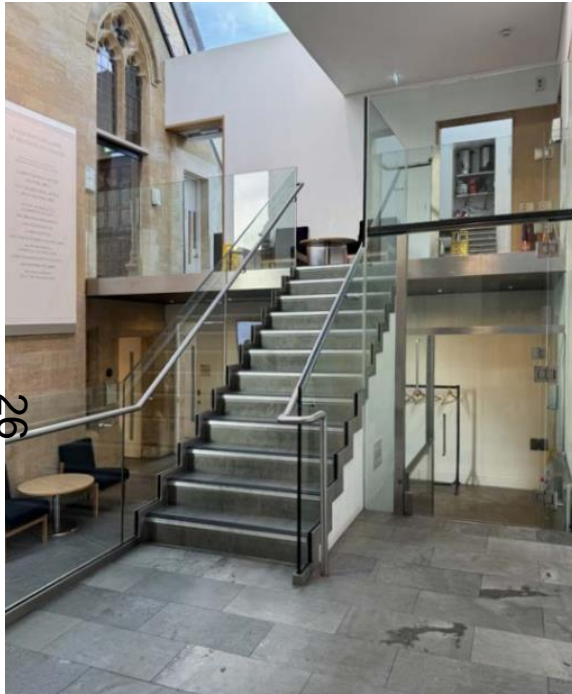
Northern elevation & WWII bomb shelter



www.oxford.gov.uk



Inside of modern kitchen extension



26



www.oxford.gov.uk



View of college library & west stairs



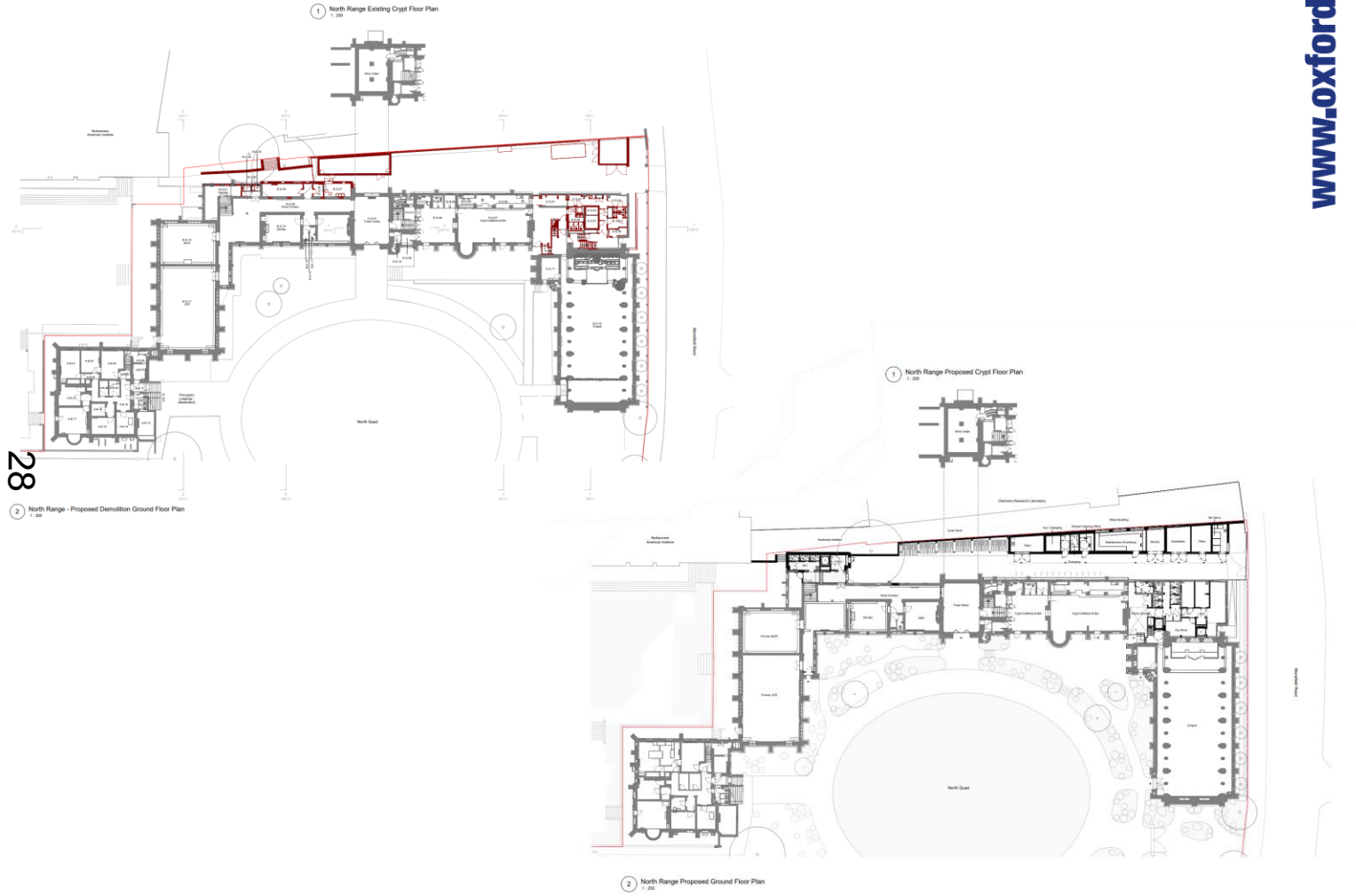
2.



www.oxford.gov.uk



Ground floor demolition & proposed

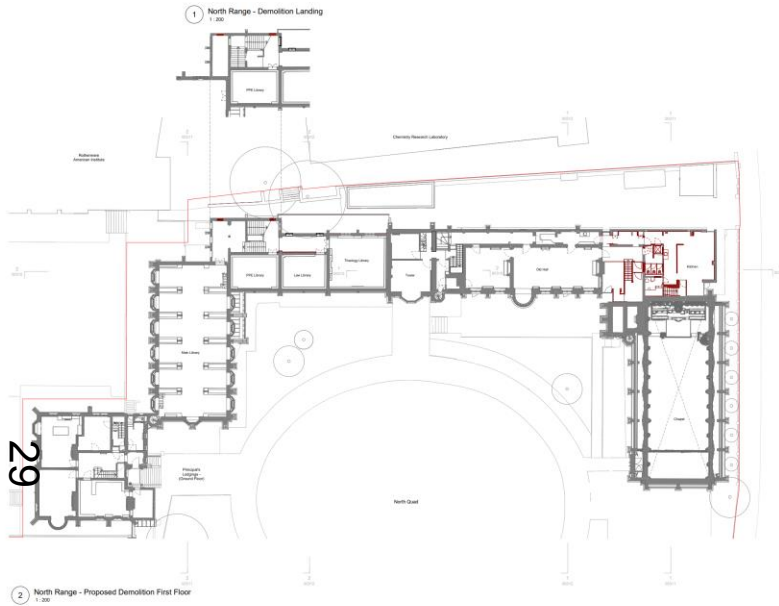


www.oxford.gov.uk

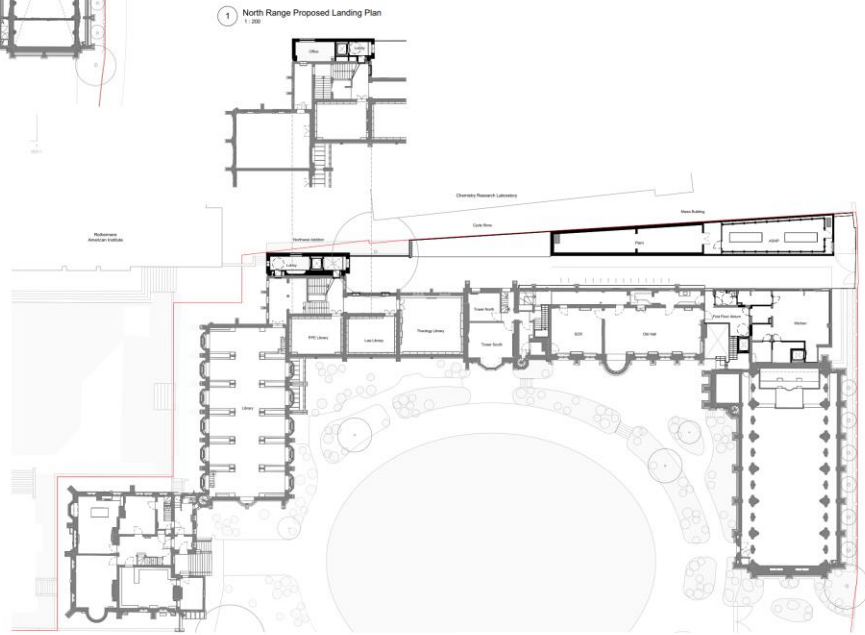


First floor demolition & proposed

www.oxford.gov.uk



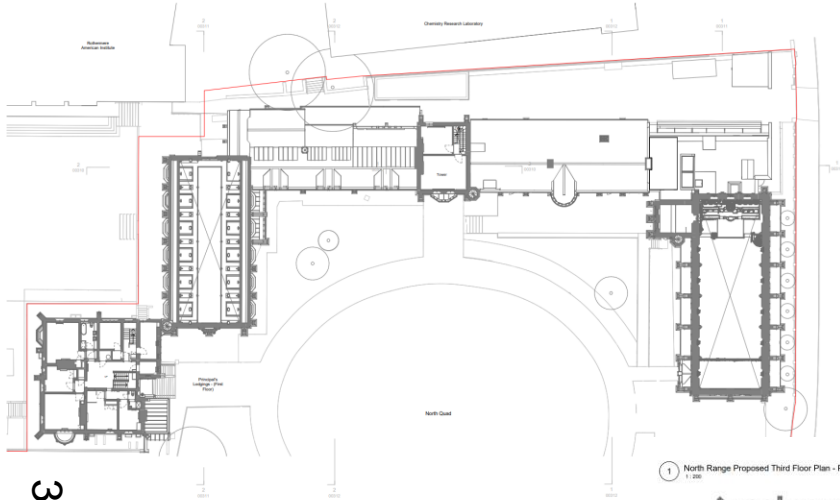
2 North Range - Proposed Demolition First Floor
1:200



2 North Range Proposed First Floor Plan
1:200

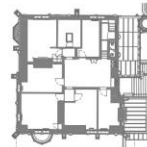


Second floor demolition & proposed

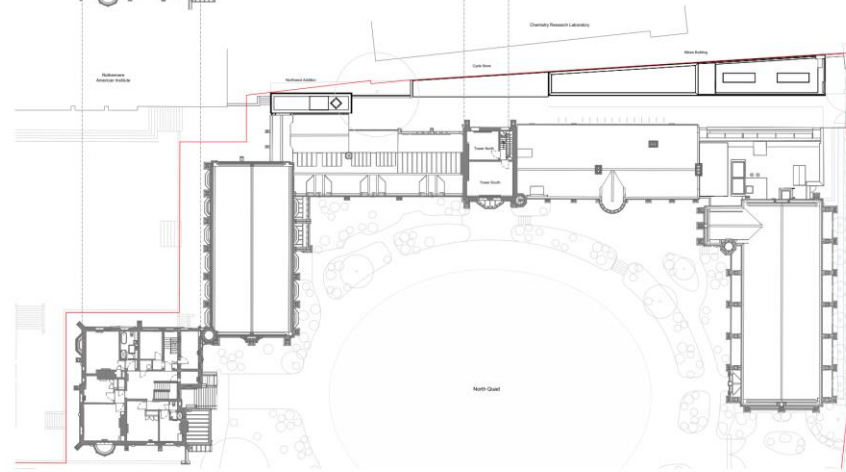


30
1 North Range - Proposed Demolition Second Floor Plan

1 North Range Proposed Third Floor Plan - Principal's Lodgings
1:200



2 North Range Proposed Third Floor Plan - Tower
1:200

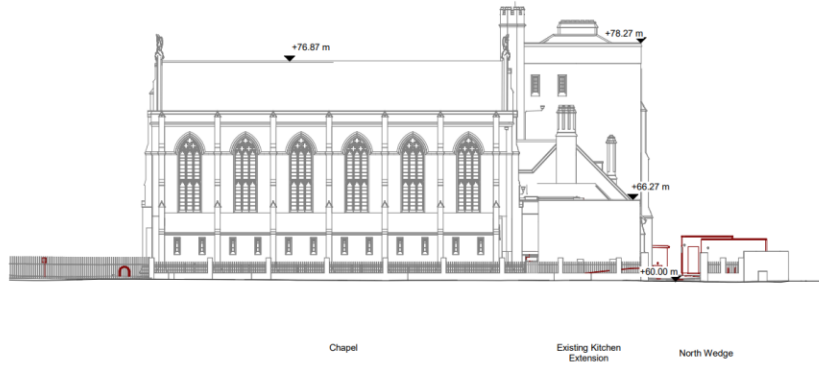


3 North Range Proposed Second Floor Plan
1:200

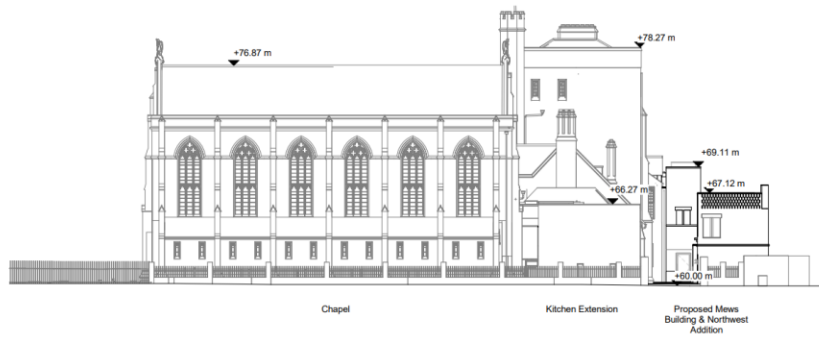
www.oxford.gov.uk



East Elevation demolition & proposed



1 North Range - East Elevation - Demolition
1:200



2 North Range - East Elevation - Proposed
1:200



Section through library extension



1 North Range - North Elevation - Demolition
1:200

32

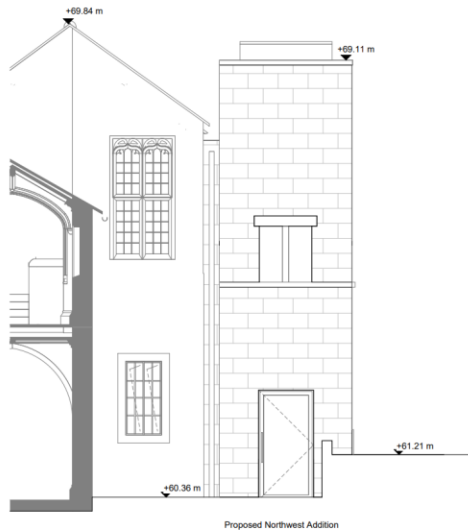


2 North Range - North Elevation - Proposed
1:200

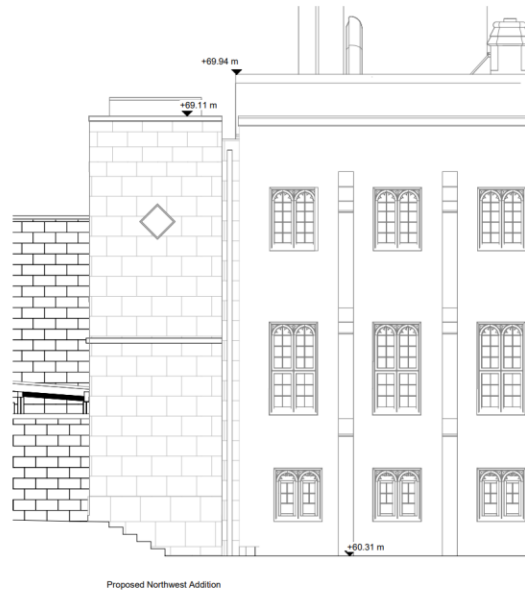


Library extension east & west elevations

33



1 North Range - Proposed Northwest Addition - East Elevation
1:50



2 North Range - Proposed Northwest Addition - West Elevation
1:50



Library extension east & west elevations

34



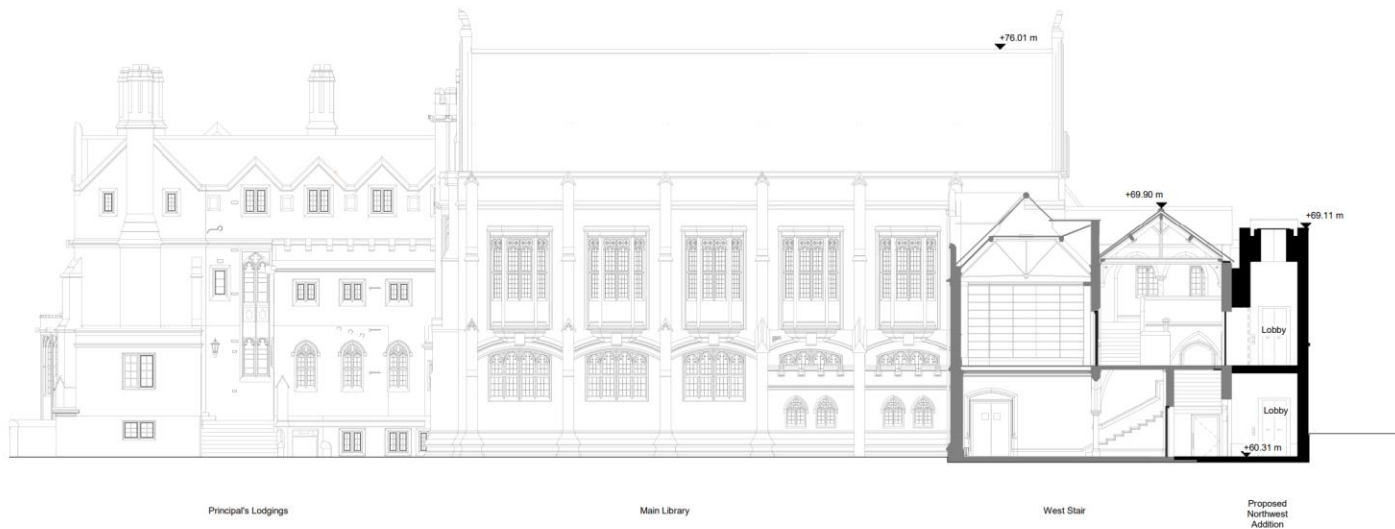
Proposed Northwest Addition

1 North Range - Proposed Northwest Addition - North Elevation
1:50



Section through library extension

35



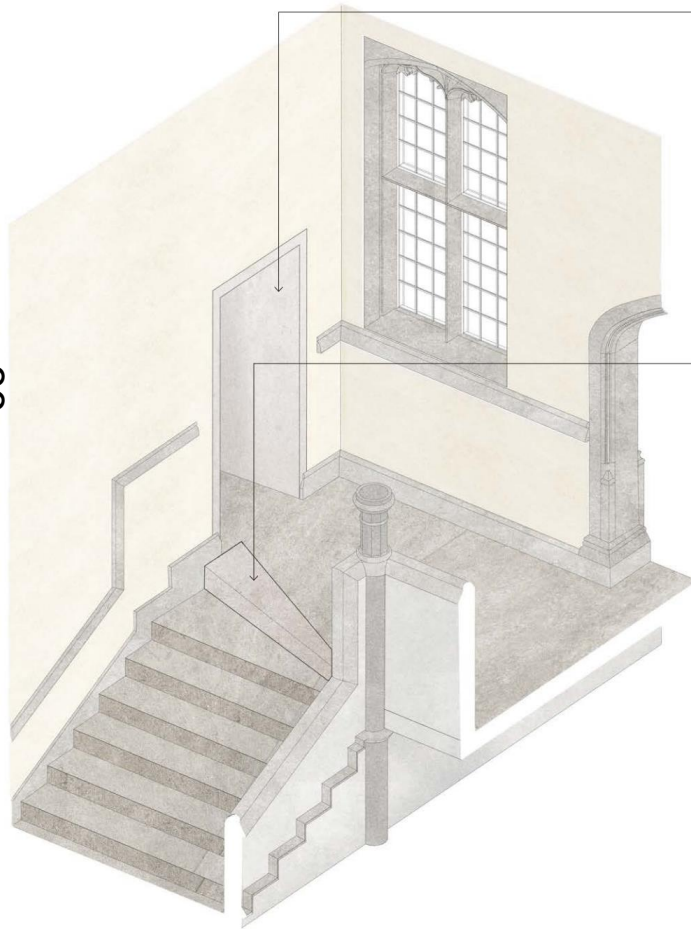
2 North Range - Section FF - Proposed
1:100



Details of internal works for new opening to library extension

1.

36



OPENINGS

The existing fabric will be carefully removed, preserved, and reinstated where possible. The opening details will be kept simple to avoid detracting from Champneys' design, with further development planned for the next stages.

STAIR INFILL PIECE

A wedge-shaped piece of stone will be cut to fit the existing stairs and attached to the larger top step, creating a more spacious landing area. The step sizes will remain compliant to regulations. The stone skirting and dado rail, carefully removed, will be reinstated to align with the new stair.

www.oxford.gov.uk



Existing and proposed west corridor



www.oxford.gov.uk



Lift extension from Chemistry Building car park



38



www.oxford.gov.uk

